

# KISII EYE HOSPITAL

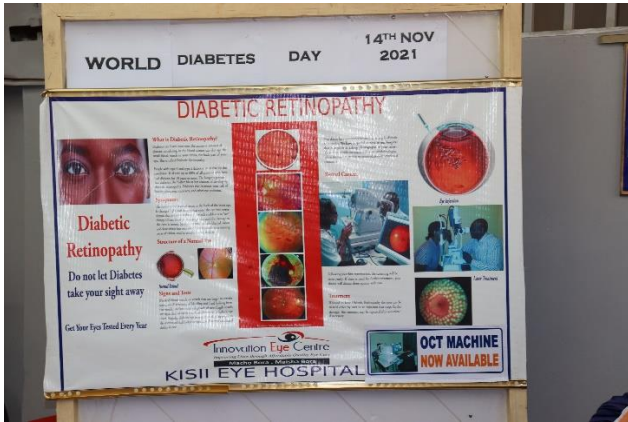
## NOVEMBER 2021 NEWSLETTER





## WORLD DIABETES DAY:

Diabetic retinopathy, also known as diabetic eye disease (DED), is a medical condition in which damage occurs to the retina due to diabetes mellitus. It is a leading cause of blindness in developed countries. November being a Diabetic Eye Disease month, we joined the world to commemorate the World Diabetes Day on 14<sup>th</sup> November, 2021. We created awareness about the disease to our patients and sensitized them on the various treatment available in our hospital.



*Mr. Benardcyril (Ophthalmic Nurse) creating awareness about Diabetic Eye Disease to the patients*

## INNOVATION EYE CENTRE- KISII EYE HOSPITAL 9<sup>TH</sup> ANNIVERSARY

Following the grand opening on 29<sup>th</sup> November 2013, Kisii Eye Hospital is now celebrating its 9<sup>th</sup> anniversary. In this regard, the team lead by the founders Prof. Dan Kiage and Mrs. Jacqueline Kiage cut cake to commemorate the day. We wish to thank everyone for the continued kind support and patronage.





## COMMUNITY OUTREACH PROGRAM:

Kisii Eye Hospital has continued to work tirelessly towards reaching the community by providing eye care services to eliminate preventable blindness. In this month of November, we held an outreach programme at Sigowet Subcounty Hospital in Kericho County. We were able to screen 244 patients, advised 46 patients for cataract surgery and 41 patients had surgery in our hospital. We thank The Fred Hollows Foundation for supporting cataract surgeries.



*Various activities at the camp site*



*Patients being ferried to Kisii Eye Hospital*



*Various activities at the camp site*





*Various activities at the camp site*



*Patients after Surgery*

## COMMUNITY REFERRAL SYSTEM (CRS):

Our cataract finders have been working tirelessly to ensure that no one is left behind in the communities they are currently working. In the month of November, the table below shows the results.

Name of Region	County	No. of House holds	Total Patients	Cataracts Advised	Cataracts done	Patients Referred to KEH
North Masaba Sub County	Nyamira	86	306	18	9	43
Nyamira North Sub County	Nyamira	127	127	67	30	67
<b>TOTALS</b>						



*Cataract Finder Zephaniah with patients from Nyamira North Sub County*



*Cataract finder Douglas taking visual Acuity*





## Our Contacts

Location: Kisii Town- Behind Kisii Primary School,  
Nyanchwa Area

Postal Address: P.O.Box 1010 - 40200 Kisii

Telephone: +254 58 20 31994, +254 727 807097

[info@innovationeyecentre.co.ke](mailto:info@innovationeyecentre.co.ke)

[www.innovationeyecentre.co.ke](http://www.innovationeyecentre.co.ke)